

A L E X T U R C O
A R T D E S I G N E R

ArtisticSurfaces

The frontier of art applied to the interior design world. Unlike most works of art that can typically be displayed only in rooms with optimal environments, the **ALEX TURCO DECORATIVE ART PANELS** have the versatility of being exhibited and appreciated in any location, including wet areas and outside walls.

The graphic images are laser printed and hand processed on **COMPOSITE ALUMINUM, PURE ALUMINUM** and **BACKLIT ART PANELS** with several coats of water resistant **epoxy resins**, bringing to life an elegant and unique art form.

Each panel is custom made accordingly to the client's taste and needs: size, pattern, color and finishes can be arranged to create the perfect art work for any environment and request. Among the main features, the possibility to choose between a **flat, moon, brush strokes, bubbles** or **minerals finish**, and between a **glossy** or a **matte** surface.

Given the top-end quality and the extreme versatility both of the design and the material, our company partners with interior design firms, architects, construction companies and business professionals, creating design solutions for the most demanding clients in a number of different applications, from hospitality to residential, from yacht to cruise ship decoration, from retail stores to wellness.

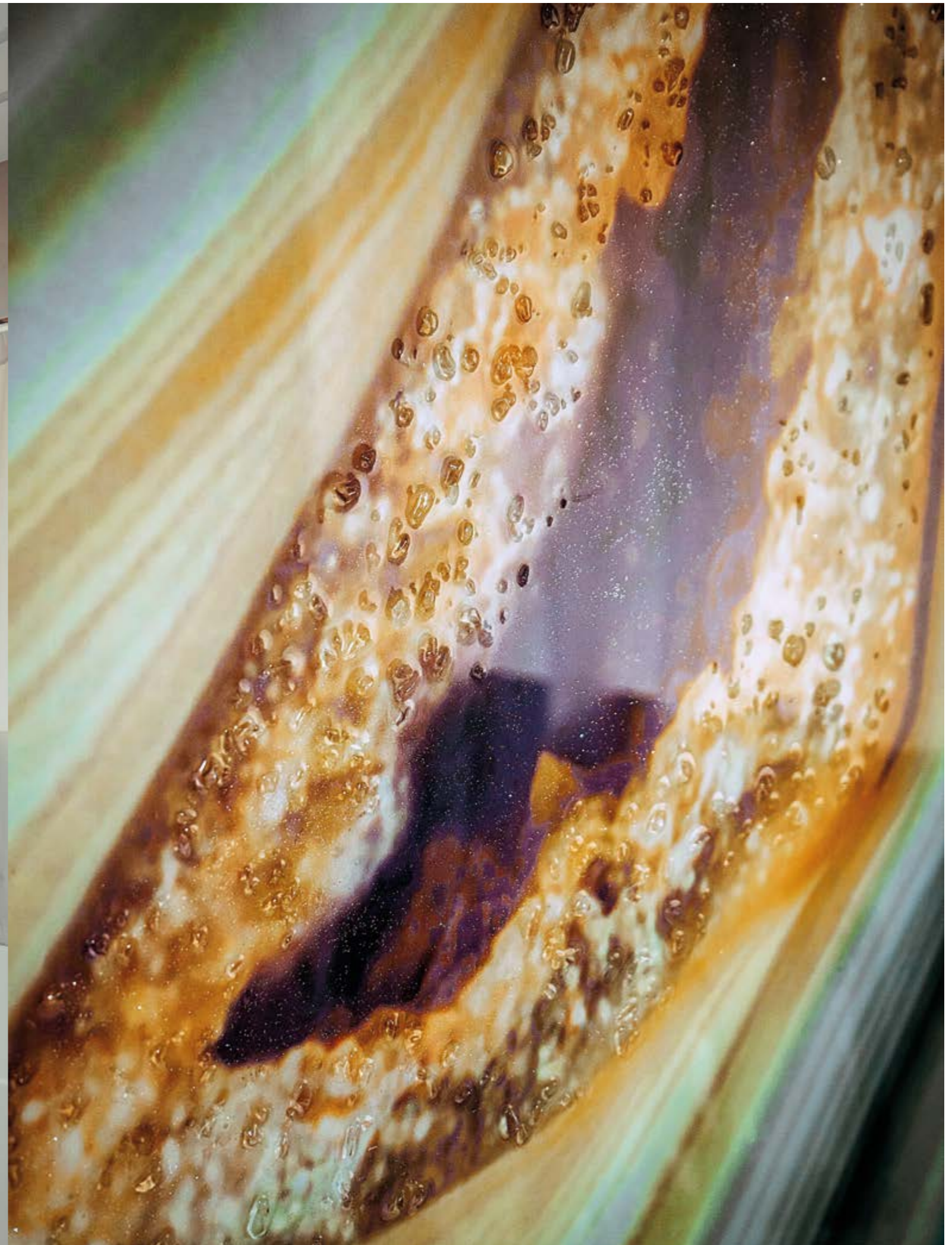
Applications



White Agate | Minerals collection | Flat finish



Blue Agate | Minerals collection | Flat finish









Black Poison | Underwater collection | Moon + Bubbles finish



Rusty Sand | Abstract collection | Moon finish



Bamboo Forest in Gold | Organic collection | Brush Strokes finish







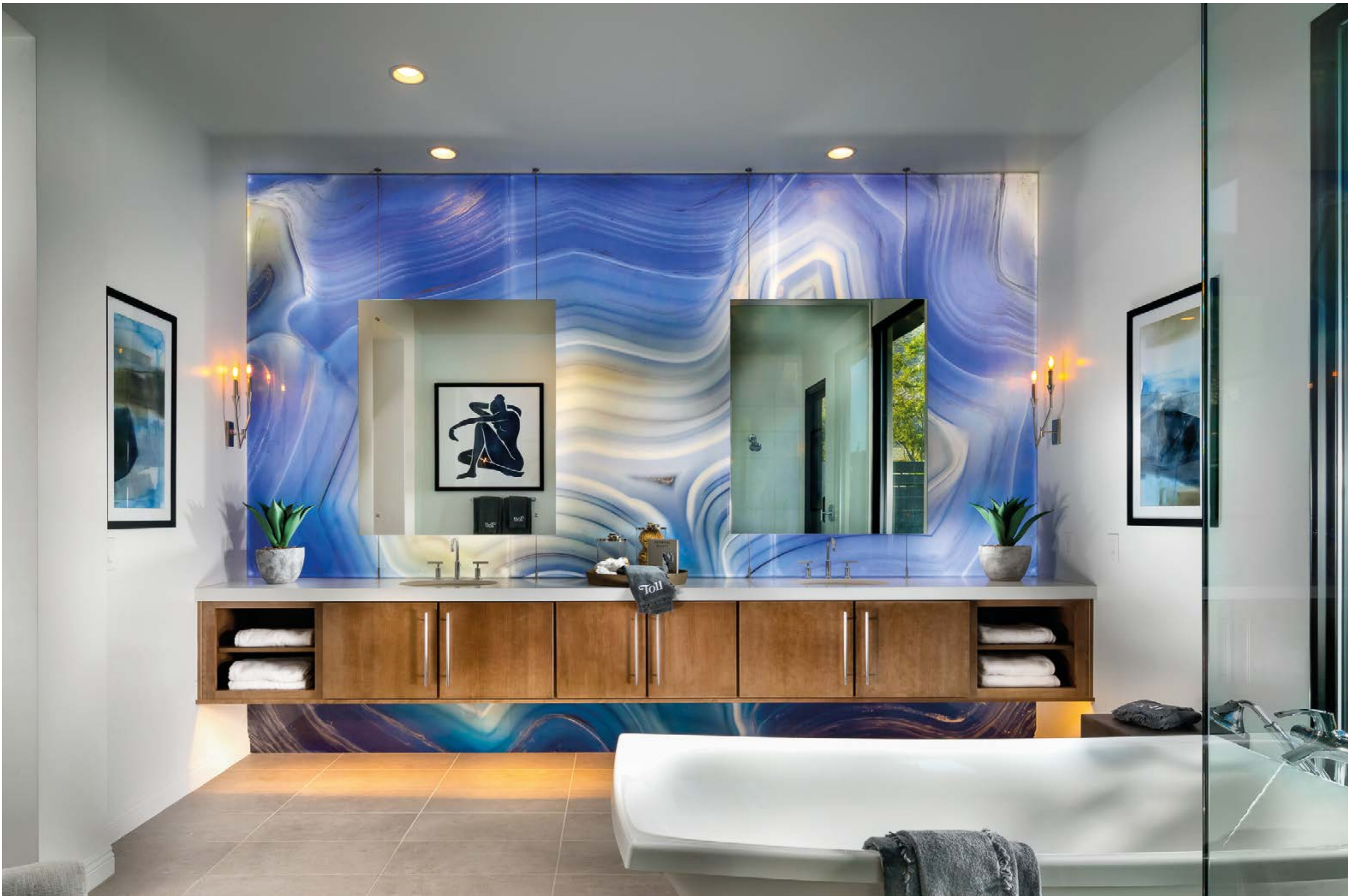


Aspero custom colors | Liquid Dreams collection | Brush Strokes + Minerals finish



Black Smoke | Liquid Dreams collection | Brush Strokes + Bubbles finish



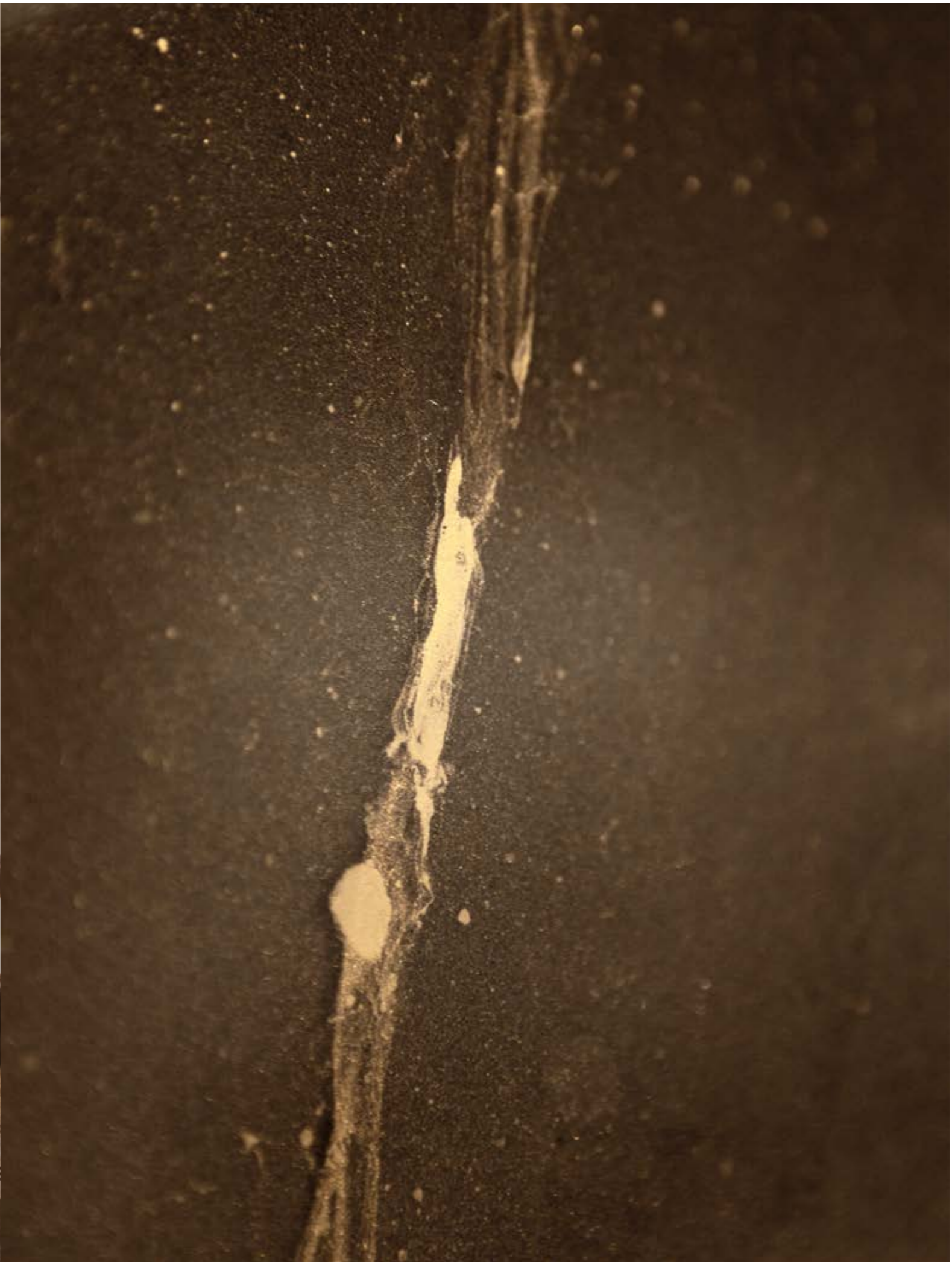


Blue Monolith | Minerals collection | Flat finish





Light Crust 1 | Minerals collection | Brush Strokes finish



Bronze Vein | Abstract collection | Flat finish



Dark Soft Waves | Abstract collection | Flat finish







White Heart 2 | Minerals collection | Brush Strokes finish





Dna in Bronze | Organic collection | Moon + Bubbles finish

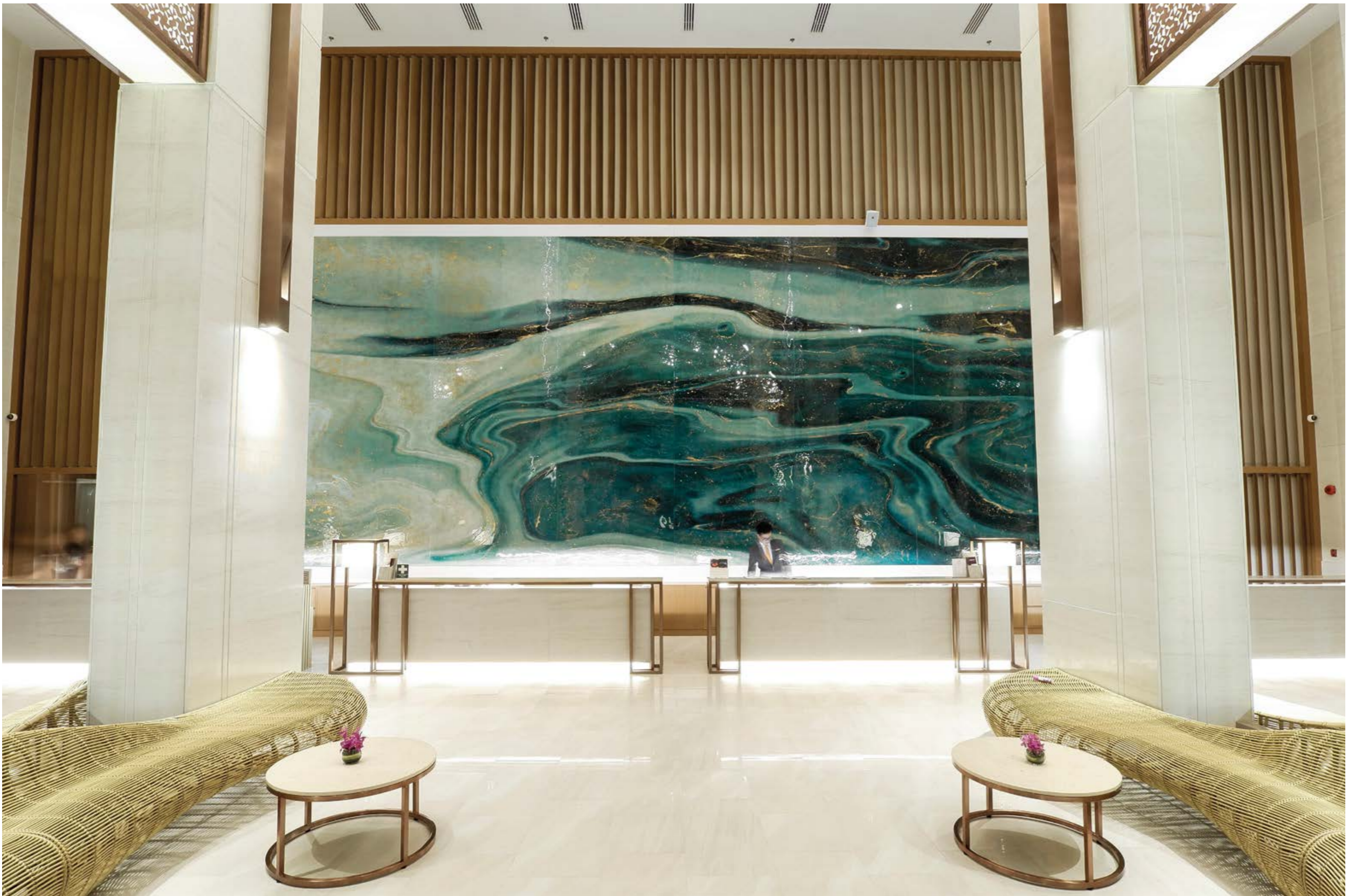


Drops in silver and blue | Underwater collection | Brush Strokes + Bubbles finish



Deeper in Blue | Underwater collection | Minerals finish







Silver Flow | Abstract collection | Flat finish



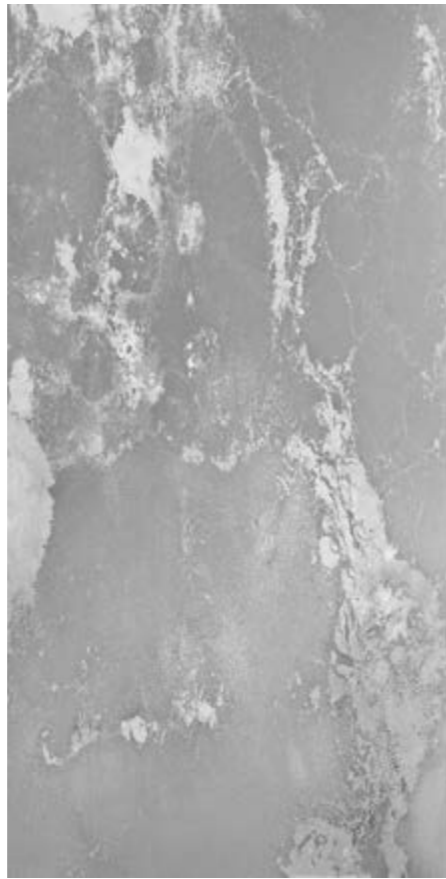




Collections



White Galaxy



Silver Galaxy



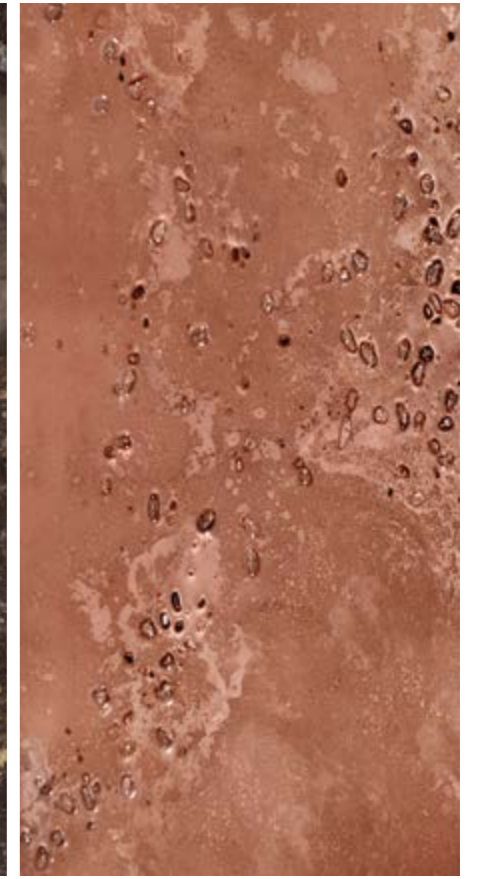
Golden Galaxy



Bronze Galaxy



Fango Galaxy



Copper Galaxy



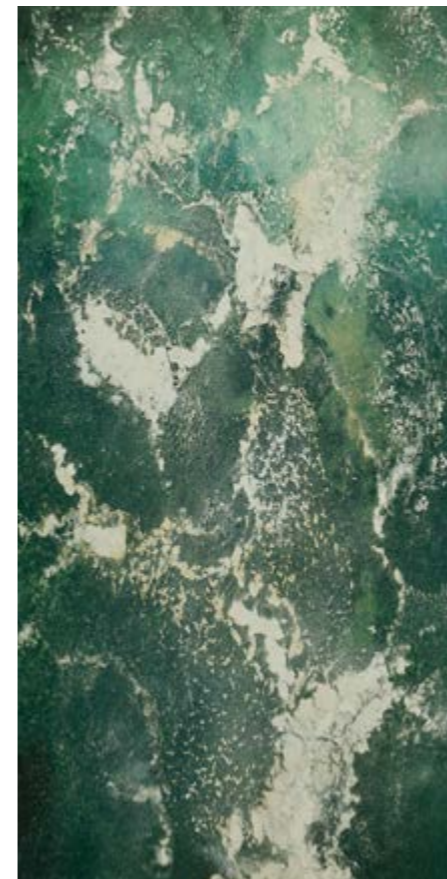
Brass Galaxy



Champagne Galaxy



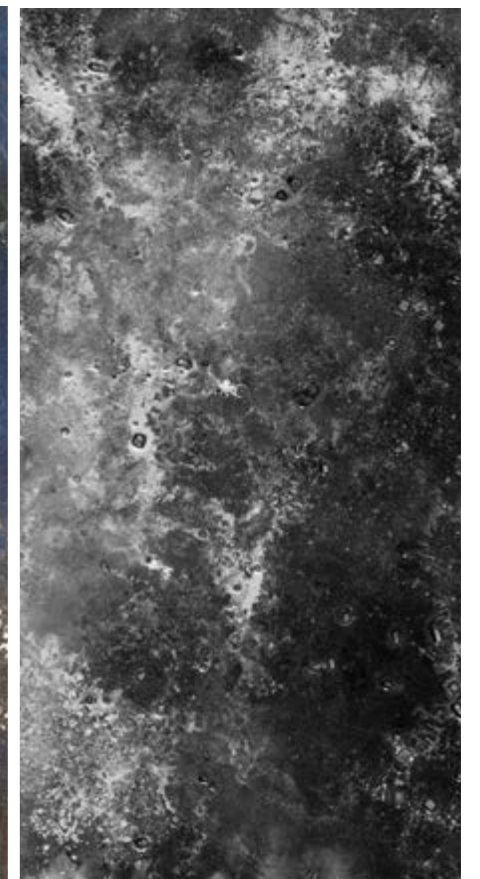
Cream Galaxy



Green Galaxy



Nuvola



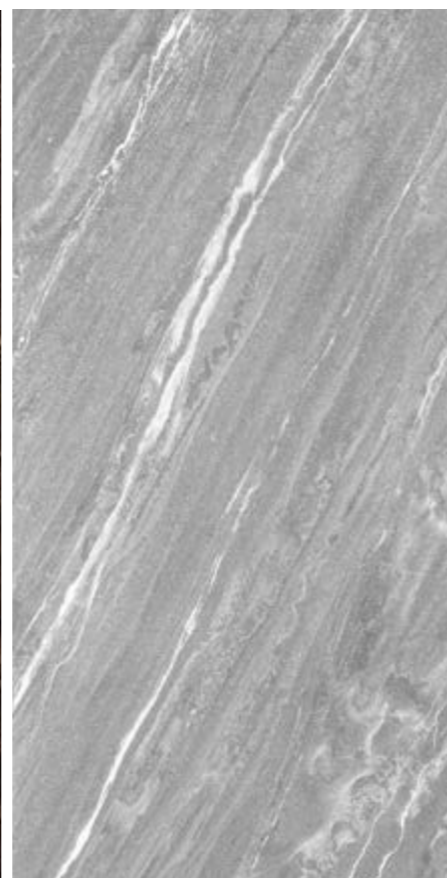
Plutone



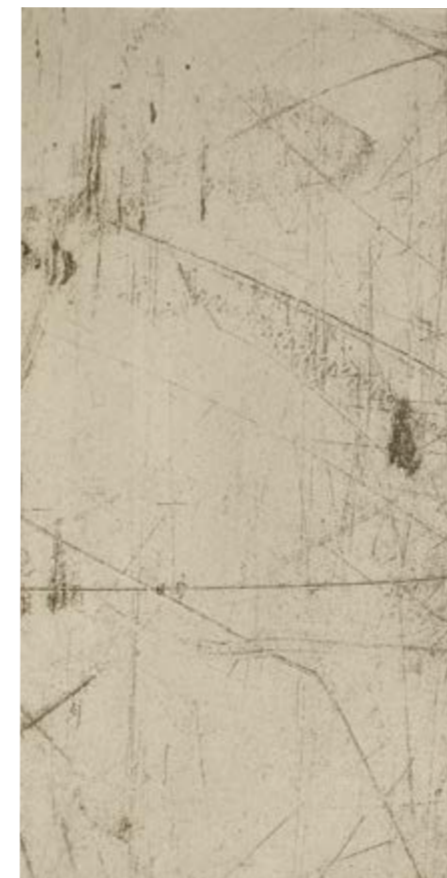
Pearl Vein



Brass Vein



Silver Vein



Champagne Scratches



Golden Scratches



Silver Scratches



Silver Quartz Cascade



Golden Quartz Cascade



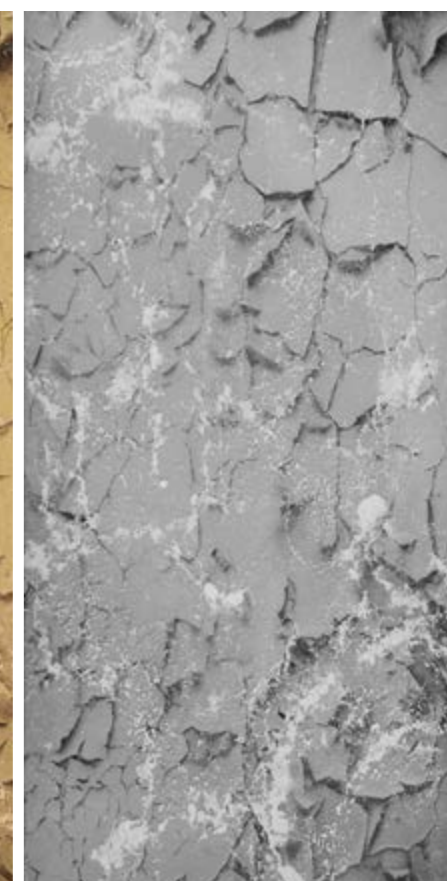
Champagne Quartz Cascade



Champagne Wall



Golden Wall



Silver Wall



Light Silver Flow



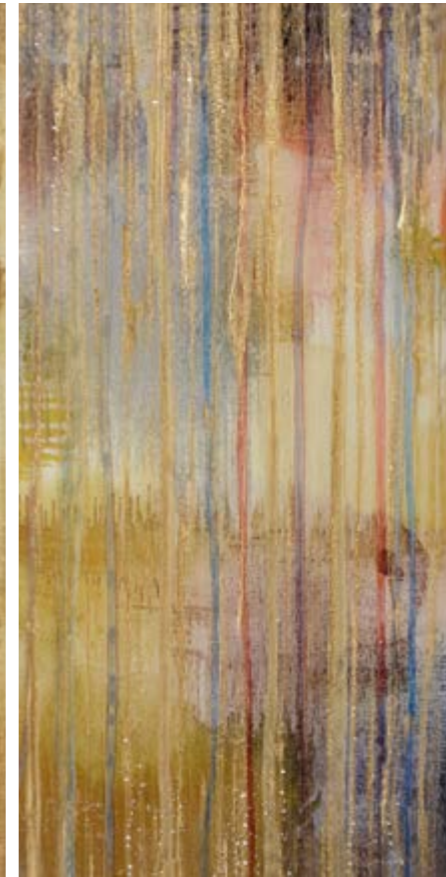
Silver Flow



Dark Silver Flow



Golden Flow



Colors Flow



Copper Flow



Light Gray Blue Flow



Cream Flow



Cream and Silver Flow



Dark Soft Waves



Brass Soft Waves



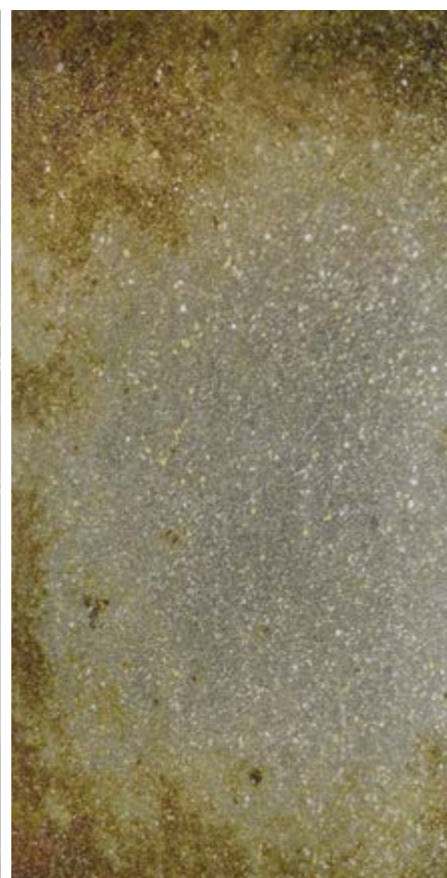
Silver Soft Waves



Antique Blue



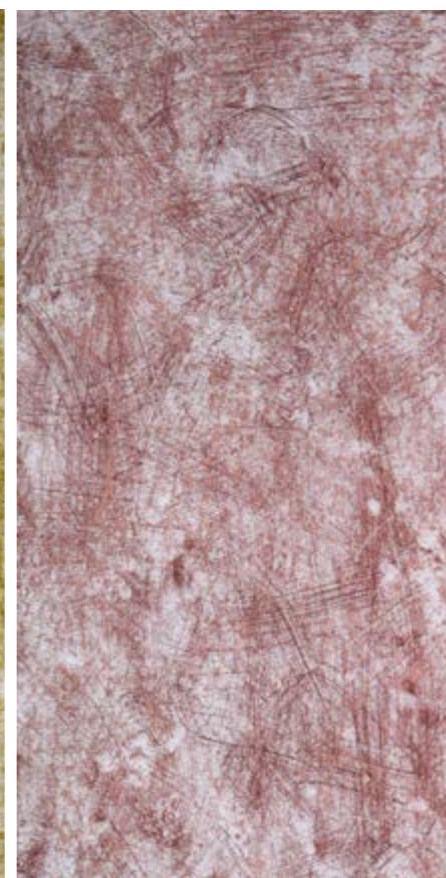
Antique Bronze



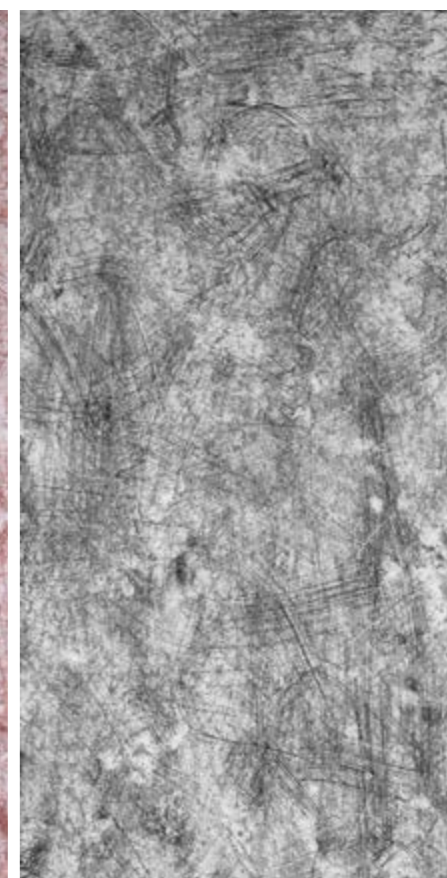
Golden Ghost



Brass Azarel



Copper Azarel



Silver Azarel



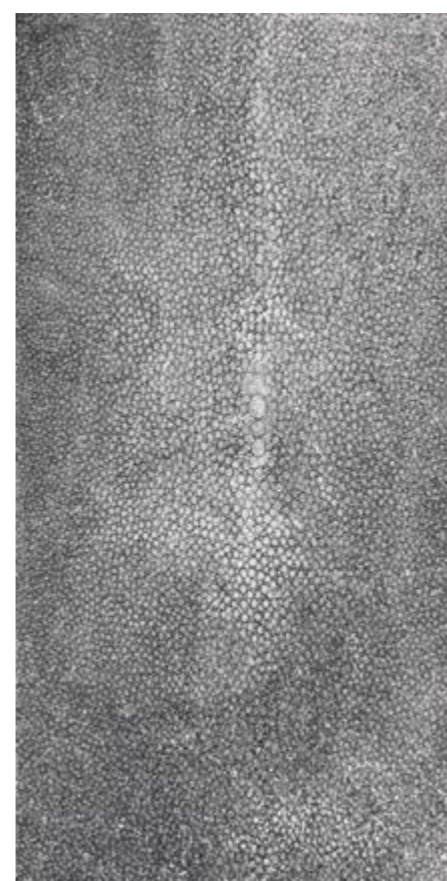
Copper Ghost



Silver Ghost



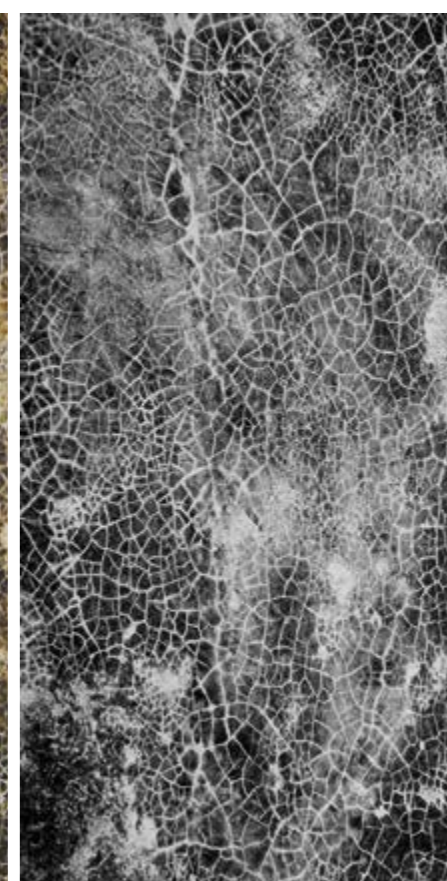
Brown Ghost



Shagreen



Golden Rivers



Silver Rivers

Mirror Reflex Collection

Minerals Collection



Black Mercury



Cold Mercury



Warm Mercury



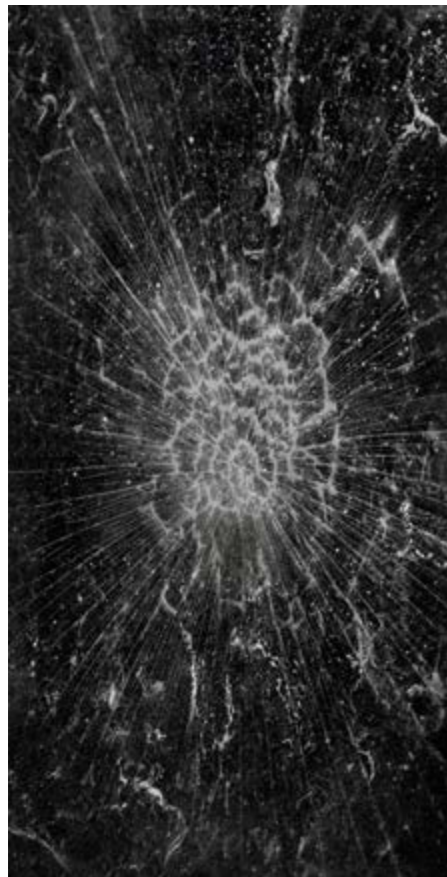
Blue Agate 1



Blue Agate 3



Blue Agate 4



Black Spider



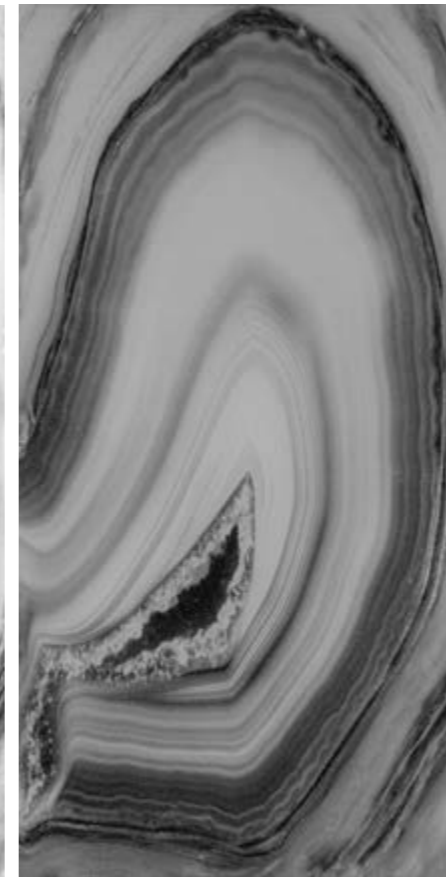
Metal Blossom



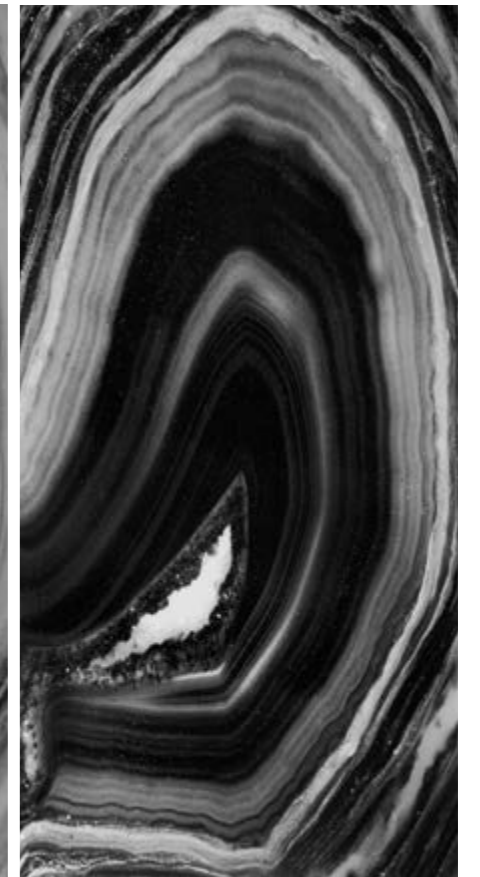
Metal Wisteria



White Agate



Silver Agate



Black Agate



Colored Agate



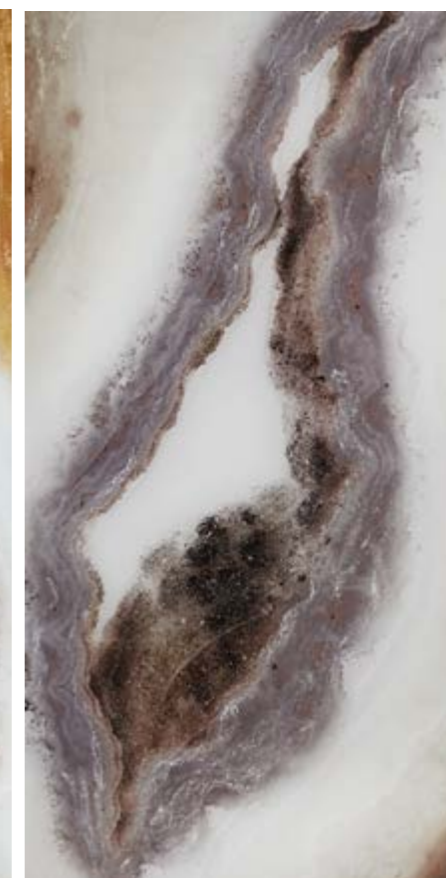
Bronze Agate



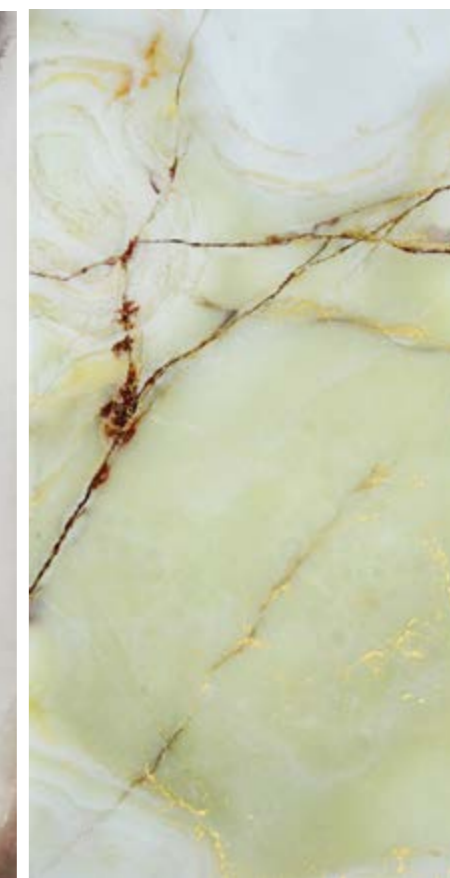
Golden Agate



White Heart



White Heart 2



Alabaster



Beige Agate



Beige and Blue light Agate



Taupe Agate



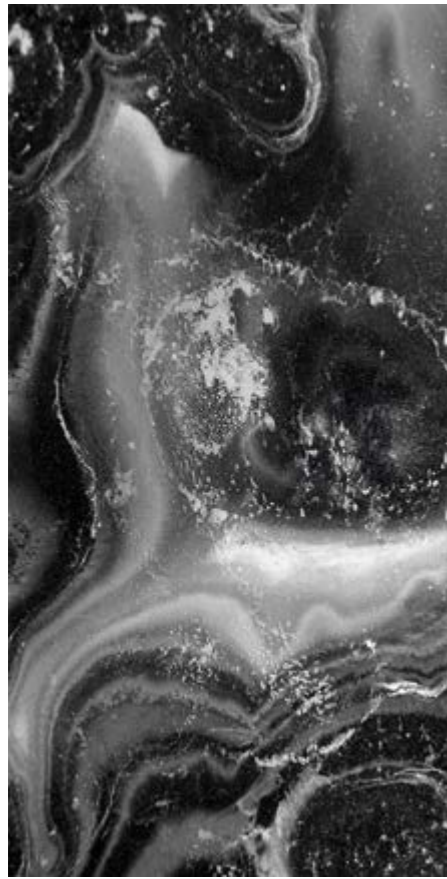
Light Blob in cream



Dark Blob



Light Blob in blue



Black Malachite



Cream Malachite



Green Malachite



Blue Monolith



Purple Monolith



Green Monolith



Taupe Geode



Blue Geode



Lapis



Dark Crust



Light Crust 2



Light Crust 1



Rock Layers in brown



Rock Layers in black



Stratum



Orange Onyx



Black and White Onyx



Noir Sahara



Stratum in light blue



Nettuno



Nettuno in bronze



Cream Waves



Onyx Layers



Green Onyx



Bamboo forest in silver



Bamboo forest in gold



Bamboo forest in green



Cream DNA



Bronze DNA



Black DNA



Bamboo jungle in brown



Bamboo jungle in green



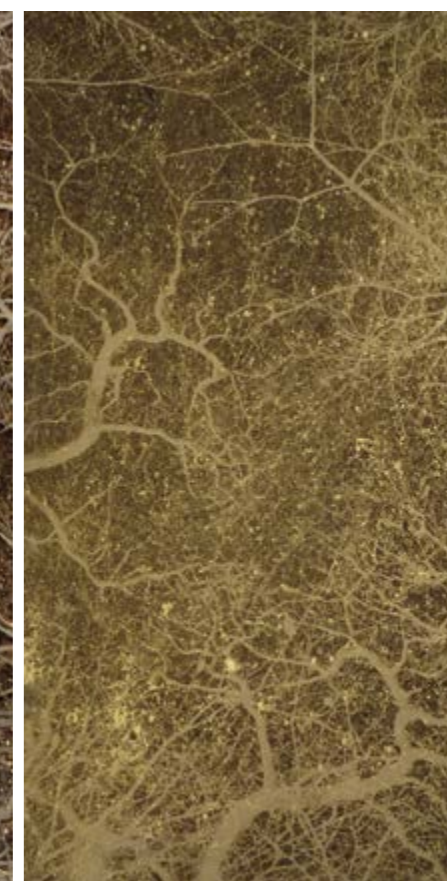
Green bamboo



Dark Limbs



Light Limbs



Brass Limbs

Organic Collection

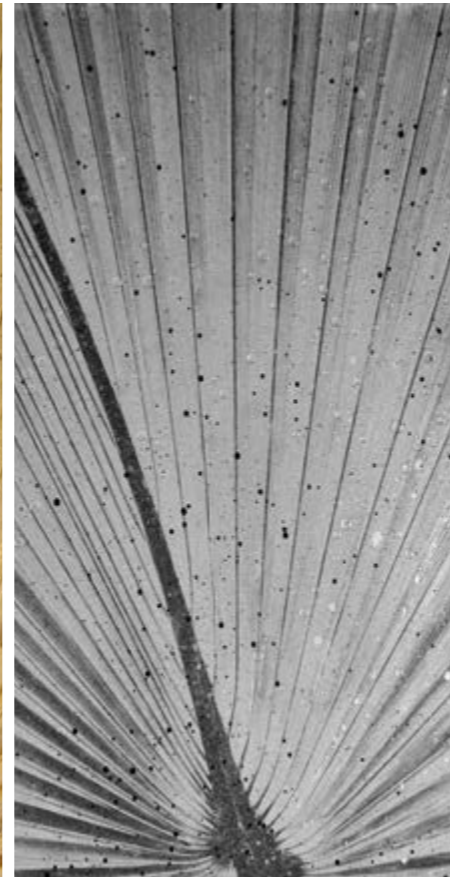
Liquid Dreams Collection



Cream Palm



Golden Palm



Silver Palm



Black Smoke



White Smoke



Nicotina



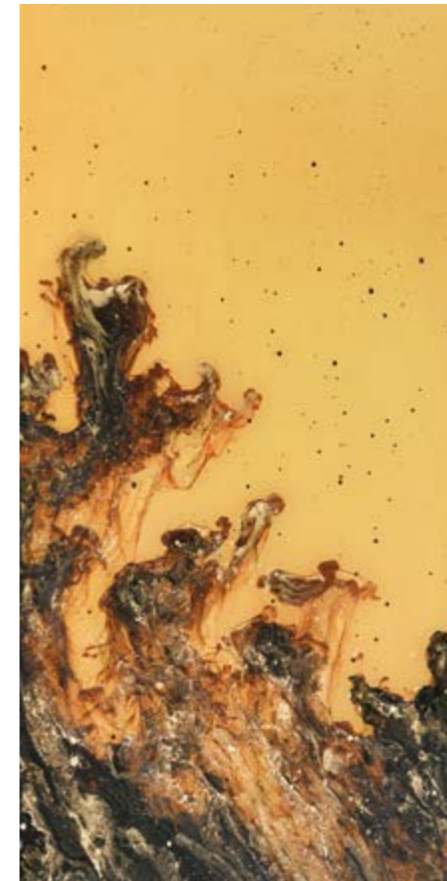
Day in Aspen



Night in Aspen



Fossil Wood



Orange Souls



Blue Souls



Black Souls



Black Spirits



White Spirits



Fluid



Cohesion in gold



Cohesion in silver



Silver liquid metal



Aspero 2



Aspero



Azul



Gold liquid metal



In the blue rain



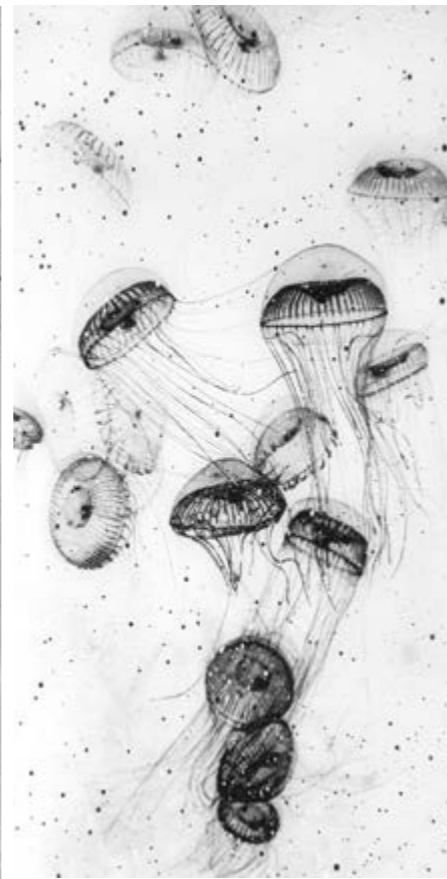
In the black rain



Black Poison



Silver Poison



White Poison



Cream Poison



Deeper in Cream



Deeper in Green



Blue Poison



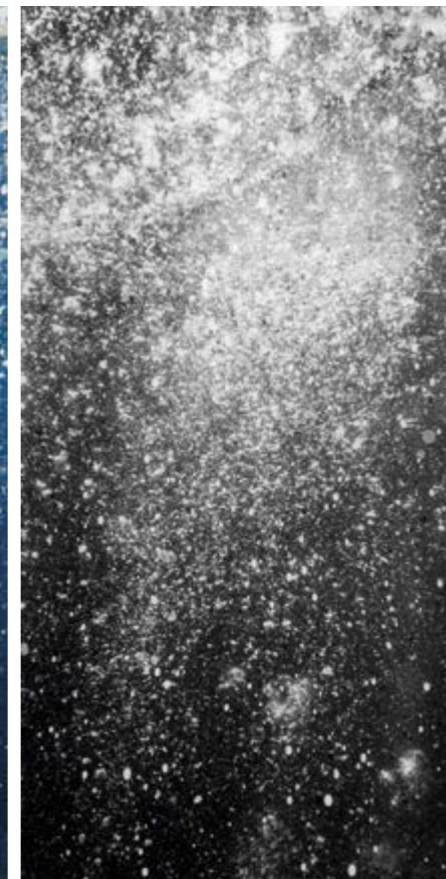
Brown Poison



Golden Poison



Deeper in Blue



Deeper in Black



Deeper in Dark Cream

Underwater Collection

Oriental Tales Collection



Drops in Blue



Drops in Silver and Blue



Drops in Dark Blue



Buddah pofile in cream



Buddah profile in silver



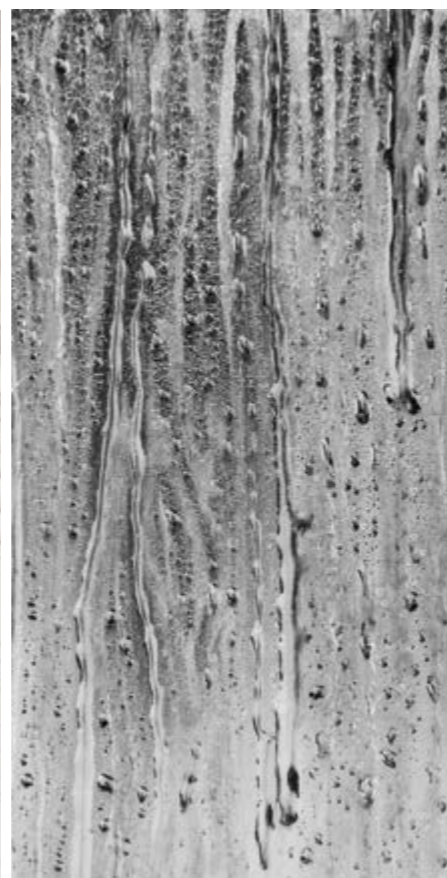
Bronze Trust



Drops in Cream



Drops in Bronze



Drops in Silver



Silver Trust



Silver Setai



Camu Setai

FOREWORD:

The **ARTISTIC SURFACES** created by **Alex Turco** are handmade coverings suitable for any location.

Our art panels are great for all environments in contact with water and moisture as well as outdoors and all atmospheric agents, even locations subject to extreme weather conditions. They are suitable for commercial as well as private spaces that could never host artworks and that have now become the focus of ambitious installations (wet areas, outdoor living, wall decorations, furniture and doors, counters and backsplash, elevators, ceilings, curved walls and columns).

In fact, this product maintains its characteristics of durability, impermeability and non-toxicity even under prolonged exposure to extreme weather conditions.

The art panel is manufactured by assembling three elements: **A)** aluminum or acrylic sheet + **B)** digital UV printing customized through graphics plus additional handmade and artistic touches using acrylic paints and metal powders + **C)** a surface made of layers of transparent and waterproof bi-component epoxy resin.

SUPPORT:

Our artworks are made on a smart and versatile material, from which we use 3 different types:

- **COMPOSITE ALUMINUM** is a sandwich of two layers of aluminum and polyethylene in the core, which at thickness of 4 mm and is used for straight wall applications, showers and ceiling.

- **PURE ALUMINUM** is one mm thick and is what is suggested for curved wall applications, columns and furniture applications.

- **BACKLIT ART PANEL** is made with acrylic support with a thickness ranging from 2-8mm they are translucent and suitable for artificial back lighting (traditional or LED).

These supports are very light and workable materials: they are easy to mill, cut, bend, fold and silk-screen print. The greatest value of these materials lies in its ability to accept digital printing directly on its surface with excellent results and has the following characteristics: it is suitable for use in buildings both outdoors and indoors; it is UV ray resistant; it is perfectly flat; it is incredibly light; it has good mechanical characteristics; it is completely soundproof (it does not resonate); it is easy to work with and it does not require any anti-static treatment.

The technical data of the support are as follows:

COMPOSITE ALUMINUM:

Thickness: **0.15" / 4 mm**

Panel maximum size available: **6.5' x 10'** in the USA

2000 x 4000 mm in Europe-Asia

Weight: **1 lb/ft² / 5 kg/m²**

Thermal res: from **-122°F** to **+176°F** / from **-50°C** to **+80°C**

PURE ALUMINUM:

Thickness: **0.040" / 1 mm**

Panel maximum size available: **5' x 10'** in the USA

1500 x 3000 mm in Europe/Asia

Weight: **0.5 lb/ft² / 2,5 kg/m²**

Thermal res: from **-122°F** to **+176°F** / from **-50°C** to **+80°C**

BACKLIT:

Thickness: from **2mm/0.080"** to **10mm/0.40"**

Panel maximum size available: **6.5' x 10'** in the USA

2000 x 3000 mm in Europe/Asia

Weight: **1 lb/ft² / 5 kg/m²**

Thermal res: from **-122°F** to **+176°F** / from **-50°C** to **+80°C**

PRINTING AND COLORS USED:

The images chosen by the art designer are worked on using graphic design software tools and digital photo retouching effects.

The artistic result represents the basis on which the designer operates, first using acrylic colors through casting, brush and sponge, and then using metallic powders diluted in alcohol.

The uniqueness and value of these artworks arise specifically from the artistic/hand-made work performed on each individual plate.

The digital picture is transferred on the aluminum through an ink jet printer that uses liquid "UV curable" ink: the colors dry quickly thanks to the exposure to ultraviolet rays, which solidify and secure them to the support.

The printing technique is based on a CMYK (four colors) process. The range of colors is controlled through dedicated software and it features the full color spectrum.

The characteristics of the "UV curable" color printing process are the following: the LED lamps' UV ray frequency spectrum is non-harmful to health; the inks have very low emission of volatile organic components (VOCs); there are no toxic substances and color saturation is optimal.

FINISHING LAYER AND PROTECTION:

Plate protection and full waterproofing of the digital prints are performed manually by spreading a bi-component self-leveling EPOXY RESIN that is solvent-free and ready to use by simply mixing the base.

The client can choose between 2 types of finishing in order to have either a **GLOSSY** or a **MATTE** effect; both will protect the panel over time as well as consolidate the art layer underneath.

The main characteristics of this finishing are as follows: surface that does not yellow over time, that is waterproof, solvent-free and therefore non-toxic.

The panels are available in 5 different finishes: **Flat, Moon, Brush Strokes, Bubbles and Minerals.**

INSTALLATION:

The surface where the artwork will be installed must be flat and free of bumps, lumps, and relief. It is necessary to make sure that the surfaces to be glued are clean, dry and degreased. For gluing wood, wood moisture must not exceed 15%.

In the case of gluing on metals, the oxidized surface layers must be removed (through sanding and then washing using a degreasing solvent such as acetone).

It is necessary to sand the fiberglass surfaces or very smooth surfaces with sandpaper.

When used in moist locations with walls in plasterboard, gypsum plasters, cement plasters or marine plywood, we recommend first to waterproof the surface with an easy to find product, such as the WPS MAPEGUM by MAPEI or similar.

To glue the panels is necessary the use of skilled workers, such as tile, marble and mosaic professional installers. We suggest the use of single component polyurethane adhesive products that are both moisture and thermal stress resistant.

As a guideline, the use of a quality products suitable for this purpose and easily available in all countries are: Liquid Nails - Bostik - Trade Fix - Simson - Den Braven or KERALASTIC T flexible setting compound manufactured by MAPEI (in the USA market the product name is PLANICRETE W) or any equivalent.

The adhesive must be spread evenly on the wall using a toothed spatula.

The artwork can be applied locking it by applying pressure with the palm of the hand.



DRILLING AND ADJUSTING ON SITE:

The panels can be easily cut at the job site following these instructions:

- **small and simple cuts** can be done using a regular cutter; you will only need to trace a line then follow it with the blade a few times.

We normally advise the use of a professional metal ruler and blue tape to prevent scratching the resin on the panel. Given the fact that the panels are made of a flexible material it will be easy to cut them as the pieces will separate after cutting by simply bending the 2 parts.



- **bigger cuts** can be done using professional machinery such as the CNC ROUTER-PANEL SAW WALL SYSTEM or even better using a TABLE SAW with a specific fine tooth laminate grade blade to prevent chipping of the resin.

We always advise to make all cuts on the back of the panels to prevent resin from chipping or peeling.



- for **round cuts** such as the ones needed to install shower fixtures or any other hole that needs to be made in order to install lights or pipes, we advise the use of a hole saw for metals or a regular drill that will allow you to make several small holes so that the resin will not chip or break.



MAINTENANCE AND CLEANING:

The surface of the panel does not require special maintenance.

The resin treatment makes the surface resistant to stress, wear and tear; however, for regular cleaning we recommend cleaning products that are free from abrasives substances in order to prevent surface scratching.

There are many standard detergents on the market that are suitable for this use like Windex or any glass product is ideal for daily cleaning.

We do not recommend the use of bleach and thinners.

To obtain a beautiful finish, we recommend using a microfiber cloth with spray cleaner Menzerna "Top Inspection", Meguiars "Final Touch".

After 6/8 months, we recommend you to treat/process the panel with a wax or polish.

When polishing, we recommend you use two polishing compounds with a circular polisher in the following order: **WHITE** Meguiars Ultra-Cut Compound 105 or **GRAY** 3M 'Perfect It' Machine Polish 06064.

A L E X T U R C O
A R T D E S I G N E R

Distributed worldwide by The Art of Alex LLC

For further information please write to
info@alexturco.com

Official website
www.alexturco.com

Facebook & Instagram
[@alexturcoartdesigner](#)